

Certificate II in Supply Chain Operations

TLI20421

*Helping your staff kick-start a career in transport,
logistics and warehousing*

the
ACCM
difference

- **No extra fees!** All services included in the enrolment fee.
- **Maximum flexibility** - No set study times or off-site training, set weekly training commitments around your daily operations.
- **Suitable for full time or part time employees.**
- **All materials online** - designed to suit a wide range of learning styles. Available 24/7 via computer, tablet or mobile phone.
- **Proactive Student Advisers** - helping to drive progress.
- **Coaching and ongoing support** is part of our service.
- **Real time progress visibility** - check your staff's progress, timetable and results 24/7 via our online Employer Dashboard.

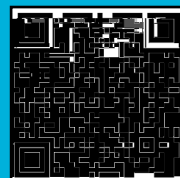
www.accm.edu.au

Foundation Skills

- Working in the Supply Chain industry
- WHS and Housekeeping practices
- Working with others in a team
- Chain of Responsibility obligations

Specialty Skills

- Picking and despatch
- Receive and replenish stock
- Service skills in the Supply Chain
- Inventory and stock control



*To see enrolment fees for
your region, please click
or scan the QR code*

courses@accm.edu.au

CERTIFICATE II IN SUPPLY CHAIN OPERATIONS

TLI20421

COURSE DESCRIPTION:

This qualification covers the critical communication and teamwork skills required to ensure that staff can work effectively with colleagues and customers. This program specifically addresses current legal obligations under Workplace Health and Safety, Chain of Responsibility and Fatigue Management laws in a practical and engaging way.

SUBJECT	UNIT	CODE	DURATION (weeks)
Starting in Warehousing and Logistics	• Participate in basic workplace communication	TLIE1003	7
	• Identify the roles and functions of the supply chain industry	TLIX0023	
Safety in Warehousing and Logistics	• Follow work health and safety procedures	TLIF0025	5
	• Conduct housekeeping activities	TLIF0022	
Warehousing	• Complete workplace induction procedures	TLIL0007	6
	• Work effectively with others in a team	TLIG0003	
	• Apply quality procedures	TLIJ2001	
	• Ensure the safety of transport activities (Chain of Responsibility)	TLIF0009	6
	• Apply fatigue management strategies	TLIF2010	
Picking and Despatch	• Pick and process orders	TLIA0022	4
	• Despatch stock	TLIA0019	
	• Package goods	TLIA0020	
	• Receive goods	TLIA0023	4
	• Replenish stock	TLIA0024	
	• Participate in stocktakes	TLIA0021	
	• Deliver and monitor a service to customers	BSBOPS304	4
	• Maintain stock control and receivals	TLIX0013X	5
in Logistics	• Deliver a service to customers	BSBOPS203	5
	• Work in a socially diverse environment	TLIG2007	